

Claremont Court, Victoria Street,, High Wycombe, Bucks, HP11 2LT
Auction Guide £130,000
Council Tax Band: B



Beautiful one-bedroom modern purpose built flat for sale in heart of High Wycombe offered to the market with no onward chain - Sale by Auction.

Address: Flat 6 Claremont Court, Victoria Street, High Wycombe, HP11 2LT

Key features

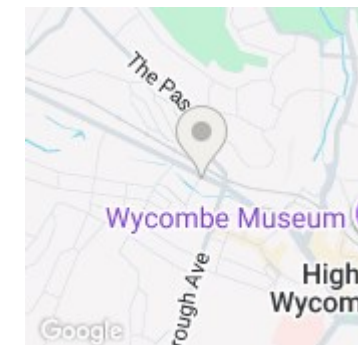
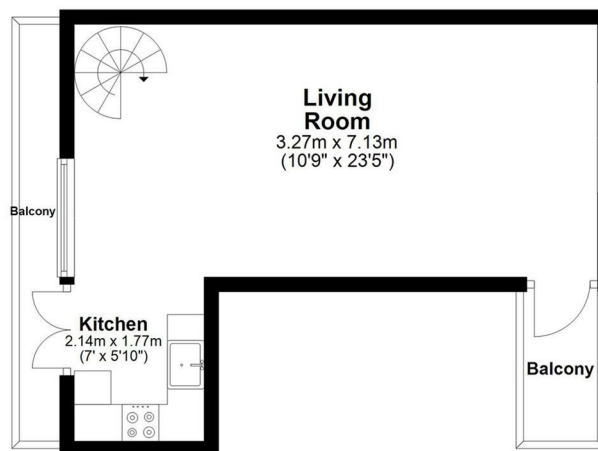
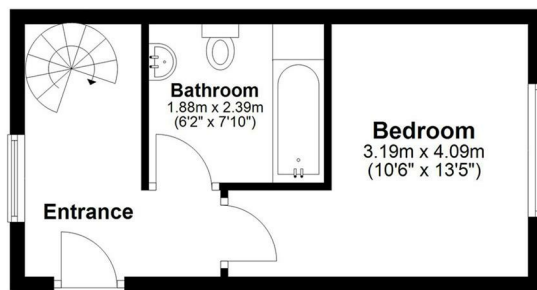
- Leasehold - Long Lease with 100 years+ remaining
- No onward chain
- Property sold by auction through "secure sale" promotional offer by Open House Buckinghamshire Estate Agent in association with Pattinson Auction House
- One bed split level ground floor flat with secure Entryphone system.
- Spacious Double bedroom
- Modern kitchen and bathroom
- Allocated off-street residents parking space with secure gated entrance.
- Dual aspect, Open plan living /dining area accessed via spiral staircase.
- Two private Juliette balconies, gas central heating to radiators and double-glazed windows
- West Side of town and quiet area
- EPC rating "C"
- Council Tax Band "B"

Description

This charming one-bedroom purpose-built apartment, located on a main road in the heart of High Wycombe, offers a unique living experience across a bright split-level layout. Sold with no



Open House Buckinghamshire



Energy Efficiency Rating		Current	Potential
Very energy efficient - lower running costs			
(92 plus)	A		
(81-91)	B		
(69-80)	C	75	75
(55-68)	D		
(39-54)	E		
(21-38)	F		
(1-20)	G		
Not energy efficient - higher running costs			
England & Wales		EU Directive 2002/91/EC	

GROUND FLOOR

FIRST FLOOR

This floor plan is for illustrative purposes only. Floor areas (including total floor area) openings are approximate.

TOTAL FLOOR AREA

Sq. meters	49.0
Sq. feet	527.43



Evolve

www.evolve-uk.co.uk